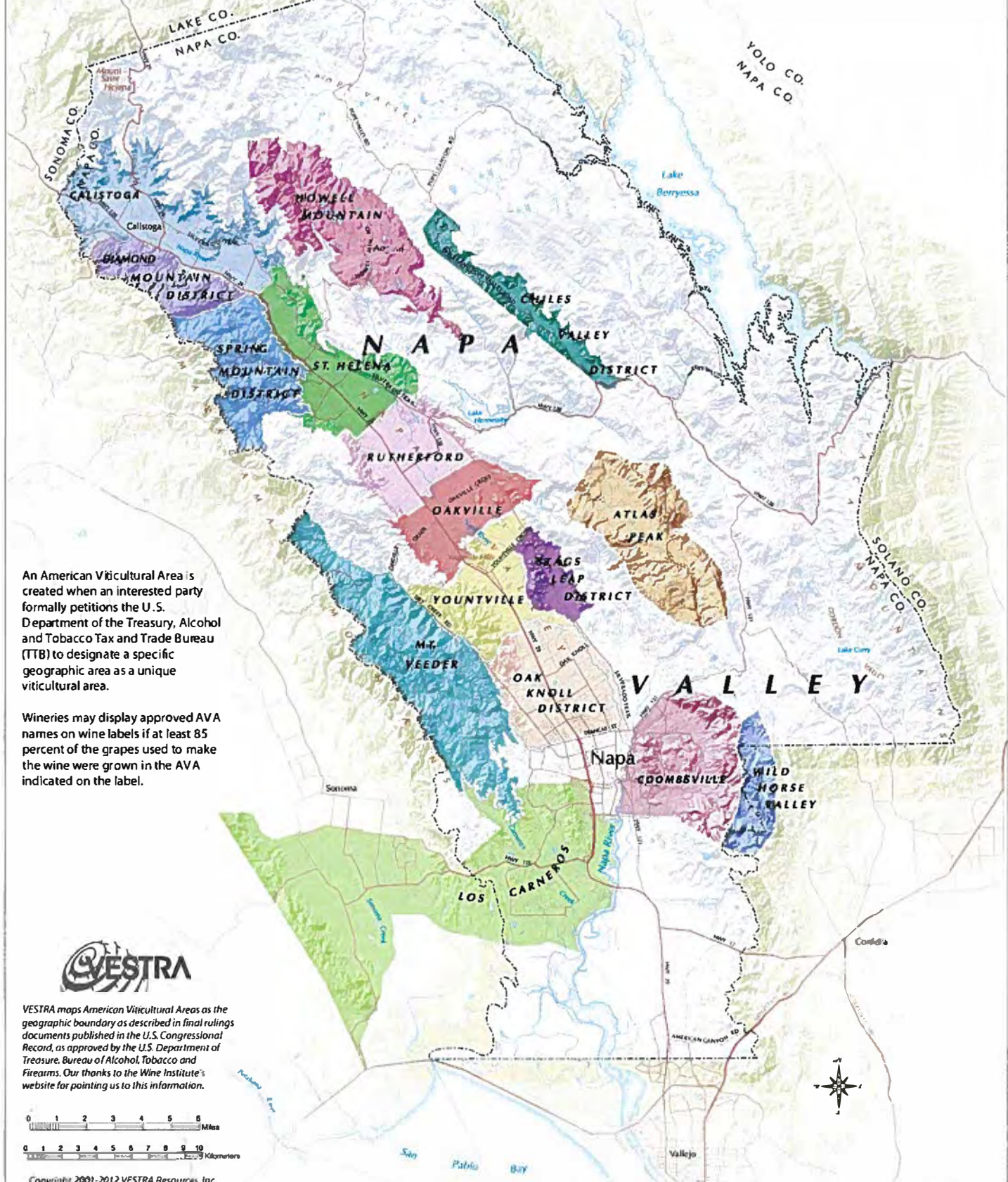


# Napa Valley

## American Viticultural Areas



An American Viticultural Area is created when an interested party formally petitions the U.S. Department of the Treasury, Alcohol and Tobacco Tax and Trade Bureau (TTB) to designate a specific geographic area as a unique viticultural area.

Wineries may display approved AVA names on wine labels if at least 85 percent of the grapes used to make the wine were grown in the AVA indicated on the label.



VESTRA maps American Viticultural Areas as the geographic boundary as described in final rulings documents published in the U.S. Congressional Record, as approved by the U.S. Department of Treasury, Bureau of Alcohol, Tobacco and Firearms. Our thanks to the Wine Institute's website for pointing us to this information.

